

ANEEXURE – 3

“Company Profile“
(Swanubhav & Yes Presentation with change Certificate)

Declaration

Date: 07-04-2022

TO WHOM SO EVER CONCERNED.

This is to certify that Mr. Ravindra Zagade (hereinafter "THE SOLE PROPRIETOR") was carrying on the business in the name and style of M/s. Yash Enterprises which was later on changed to Yash Facilities Services (hereinafter "THE SOLE PROPRIETORSHIP") since 01-12-2003. Later, the Sole Proprietor incorporated a Private Limited company with the name and style of Swanubhav Corporate Services Private Limited on 04/07/2018 having CIN: U74999PN2018PTC177541 and registered office located at S. No. 13/1, 13/5 A Wing Fl-09, Ganesh Height's Dapodi, Pune 411012 the complete business of the said Sole Proprietorship was transferred on the said Private Limited Company.

The business activities of the said private limited company as per the main object clause of the Memorandum of Association of the company is as follows:

Providing services of manpower supply, civil works and infrastructure development, providing services relating to BTS, M/W, Antenna & Allied equipment's, GSM / CDMA network infrastructure development, tower audit, engineering services, liaison services, permission certificates and supply of infra equipments and accessories.

For Azhar Shaikh & Associates


CS Azhar Shaikh

M. No.: 45954

CoP: 16747





SWANUBHAV
GROUP OF COMPANIES

SWANUBHAV
CORPORATE SERVICES PVT.LTD



SWANUBHAV
GROUP OF COMPANIES

ABOUT US

Our strength lies in speedy implementation at the lowest possible cost with a quality deliverable.

Client's satisfaction and repeated orders is only our marketing strategy.





SWANUBHAV

GROUP OF COMPANIES

A team of experienced engineers & work force, we commit to provide an International standard Engineering solutions in Steel, Power & Cement Sector on EPC or Engineering contract basis. Our strength lies in super expertise core team with multi direction specialization to deliver speedy implementation at the lowest possible cost with an unmatched quality.



WE ARE IN



Infrastructure Sector -

Commercial & Social cause Bldgs.
(Hospital, Schools & other high
raise bldgs.)

Road & Bridges construction
(Civil & Structure or as designed)

High raise Residential Bldgs.
(include complete interiors)

An Exclusive, Elite & inexpensive
Interior works

(include. Industrial & Home
furnishing as Turnkey)

Industrial Sector

Engineering Support & Services
(Various site Studies & Design Engineering etc)

EPC / Turn Key Contracts

(Steel, Power, Cement industry & other)

Plant Services

(Logistic, O&M or as per customer
requirement)



CIVIL CONSTRUCTION

Under Civil construction, Industrial & Residential sectors are our main focus areas. Our main aim to provide an umbrella kind of support to our esteemed customers, right from concept to hand over i.e. ready to live OR use of premises. Our core strength is to provide best techno economic solution with in the stipulated time frame and quality deliverable. It is even multiplies when the availability of our services ensuring till any corner of our country.



ENGINEERING



**CONSTRUCTION
INDUSTRIAL / RESIDENTIAL**



**INTERIOR / FINISHING
- INDUSTRIAL / RESIDENTIAL**

- **• Various Studies**
(Land Survey, Geo technical Investigation etc)
- **• Architectural designs / Master Plan**
(Besides of Green field Project, Even customized solution)
- **• Detail Engineering**
(Civil / Structural design and other Electro mechanical facilities)
- **• Turnkey solution for Water/ Sewage/ ETP**

- **• RCC to finishing jobs**
- **• PWD jobs such as Sewerage & Water pipe line etc**
- **• Roads are our another focus area**
- **• An Exclusive, Elite & inexpensive Interior works**
(Incl. Home furnishing as Turn Key)

Interior Group is a separate vertical and self sustained vertical which provide services right from Architectural design, its Interior Execution along with providing the Furnishing support through selected design OR accessories.



SWANUBHAV
GROUP OF COMPANIES

STRUCTURAL & MECHANICAL ERECTION



STRUCTURAL & MECHANICAL ERECTION – STEEL & POWER SECTOR

- Master Plan & System Engineering (Besides of Green field Project, customized solutions as well)
- Structural Engineering till Erection (From Structural design and Erection work)
- Mechanical System Engineering & Erection (Individual system design and Erection work)
- Turnkey solution for Water/ Sewage/ ETP



PROJECT MANAGEMENT & COMMISSIONING SUPPORT

- Preparation of Master Schedule
- Monitoring through detail schedule (L1 to L3 level)
- Daily Progress report along with Weekly & Monthly report
- Expediting of erection activity and shop items at vendor place
- Commissioning support through experts as an additional service

A team of experienced engineers & work force, we commit to provide a Turn Key solution in Structural and Mechanical Erection works. Project Management, Commissioning supports are our other value added services as a professional & customer oriented organization. Finally, by providing Operation & Maintenance services, we proud to establish us, an one Window solution for any project in Steel, Power OR Cement sector.



SWANUBHAV
GROUP OF COMPANIES

WHY SWANUBHAV?



Package Model

(Project term Contract)

Contract value is Owner's Investment. High liability & High gain. Risk factor High

EPC Model

(Project term Contract)

Contract value is Owner's Investment, marginal liability & Standard gains. Risk factor Medium

BOO Model

(Long term Contract)

Contract value is Owner's Investment. High liability & High gain. Risk factor High

Owner's Engrs.

(Project term Contract)

Contract value is Owner's Investment, marginal liability & Standard gains. Risk factor Medium

CONTRACTOR'S SCOPE

Package wise Design
Package wise Execution
Testing & Commissioning
Individual P G test

Complete Project Design
Entire Project Execution
Testing & Commissioning
P G test

CONSULTANT'S SCOPE

Various Reports & Tender Documents
Review Engg.
Project Management
witnessing P G test
Support in Testing
Commissioning

Delivering customer oriented services with highest standard of Quality (Design, Construction, Execution & Operation) with in a scheduled Time frame is only our USP.

“ Package model shall always give a high Capital cost benefit in terms of Project as well as during Operation but at a cost of high Risk factor of overall performance.

EPC is the most adoptable model in Industry. Though having the highest security & stability in technical as well as Commercial benefits, low success rate of BOO based models are still need some more time to make win-win situation for all.”



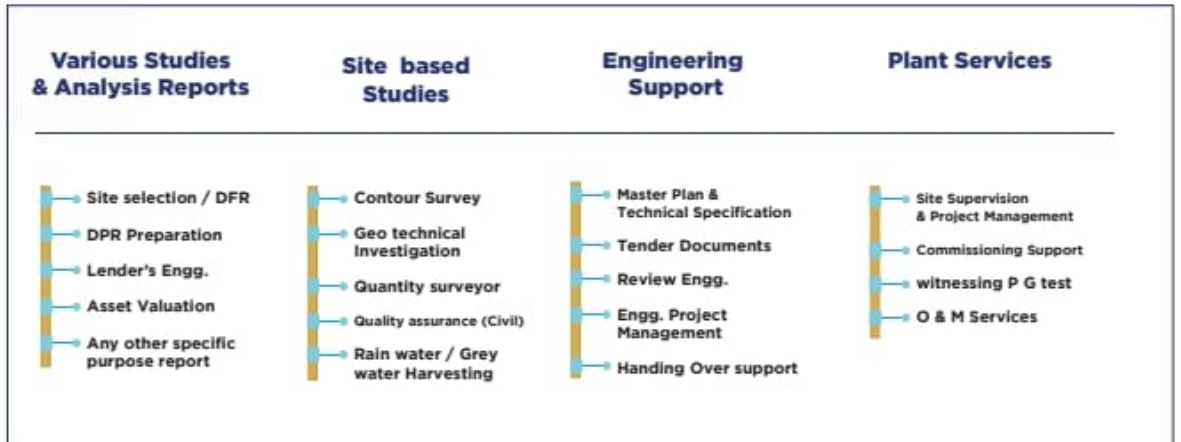
SWANUBHAV
GROUP OF COMPANIES



" Uniqueness of our concept is to connect & bringing best similar experts from different sectors & Technologies at one platform from their remote locations, to deliver a state of art Design & Construction with in best techno economics by sharing their experiences & feed backs in Design, Construction and various plant services.

EXPERTISE & EXCELLENCE

Under Infrastructure & Industrial sector construction & services business, our main focus is to provide an umbrella kind of support to our esteemed customers, right from concept to hand over. Our core strength is to provide best techno economic solution under one Umbrella which multiplies with our expertise & excellence in a range of services, as suited to.....



Services in ■ **Infra & Industrial**
■ **Projects & Constructions**

Thanks



SWANUBHAV

GROUP OF COMPANIES

SWANUBHAV
CORPORATE SERVICES PVT.LTD

SNO.13/1,13/5 A WING
OFFICE-09,
GANESH HEIGHT'S DAPODI,
PUNE, MH 411012
INDIA

Email: swanubhav.india@gmail.com
Please visit us: www.swanubhav.com

CIN No : U74999PN2018PTC177541
swanubhav.india@gmail.com

Call: 77200 99199



YASH GROUP OF COMPANIES

Facility Management services

ISO 9001:2008 Certified Co.



Yash Facilities Services Unit Of Yash Group Of Companies

Your H.R. Solutions Provider

Yash Facilities

Yash Facilities Services, an ISO 9001:2008 Certified Company based in Pune, Maharashtra is an HR consultancy firm providing effective HR solution to all client requirements right from Talent Acquisition to full and final settlement. It consists of various solutions such as Placement services/Overseas Placement, Manpower Recruitment/consultancy and Staffing Solutions/Executive Search, Training & Development, Payroll, Performance Appraisals, Statutory compliances, Government Liasoning and HR Audits.

Our company prides itself on quality services, dedication, and unparalleled commitment to excellence. Our approach to business is clean and simple. Our exceptional values are the hallmarks of our Quality Management Services System. It shines through everyday in our service, in our team.

Quick view on the verticals we cater –

Banking, Automobile, Education / Training, IT/ ITES, Office Staff, Manufacturing/ Operations, Telecom/ Technology/ ISP, Sales & Marketing, Engineering, Financial, HR, BPO and Insurance.

What we do & Where we do?

What we do?

- Executive Searches/ Hiring
- Staffing & Recruitments
- Training & Development
- Total HR Solutions & Consulting
- Payroll Solutions
- Contract Labour Services
- Security Services
- House Keeping services
- Landscaping Services

Where we do?



Verticals



IT/ITES



BPO



**HR/
RPO**



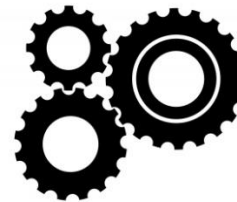
BFSI



FMCG



Automobiles



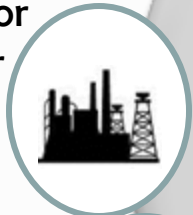
Engineering



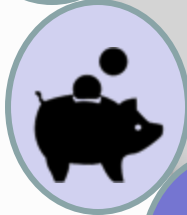
Manufacturing

Current Projects

- Production Supervisor
- Production Manager
- Quality Manager
- Sales Manager



- Security Services
- Labour contract
- Housekeeping contract



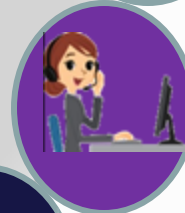
- Security Services
- Labour contract



- Java, .net, C++
- Spring, Hybernate, Angular JS
- Database Admin
- Developer / Designer



- Customer care Executive
- Sales Executive
- Back Office Executive
- Filed Sales Executive



- HR Executive
- Recruitment Executive
- APAC/ India Sourcer

- Export sales Executive
- Sales Coordinator

Current Clients



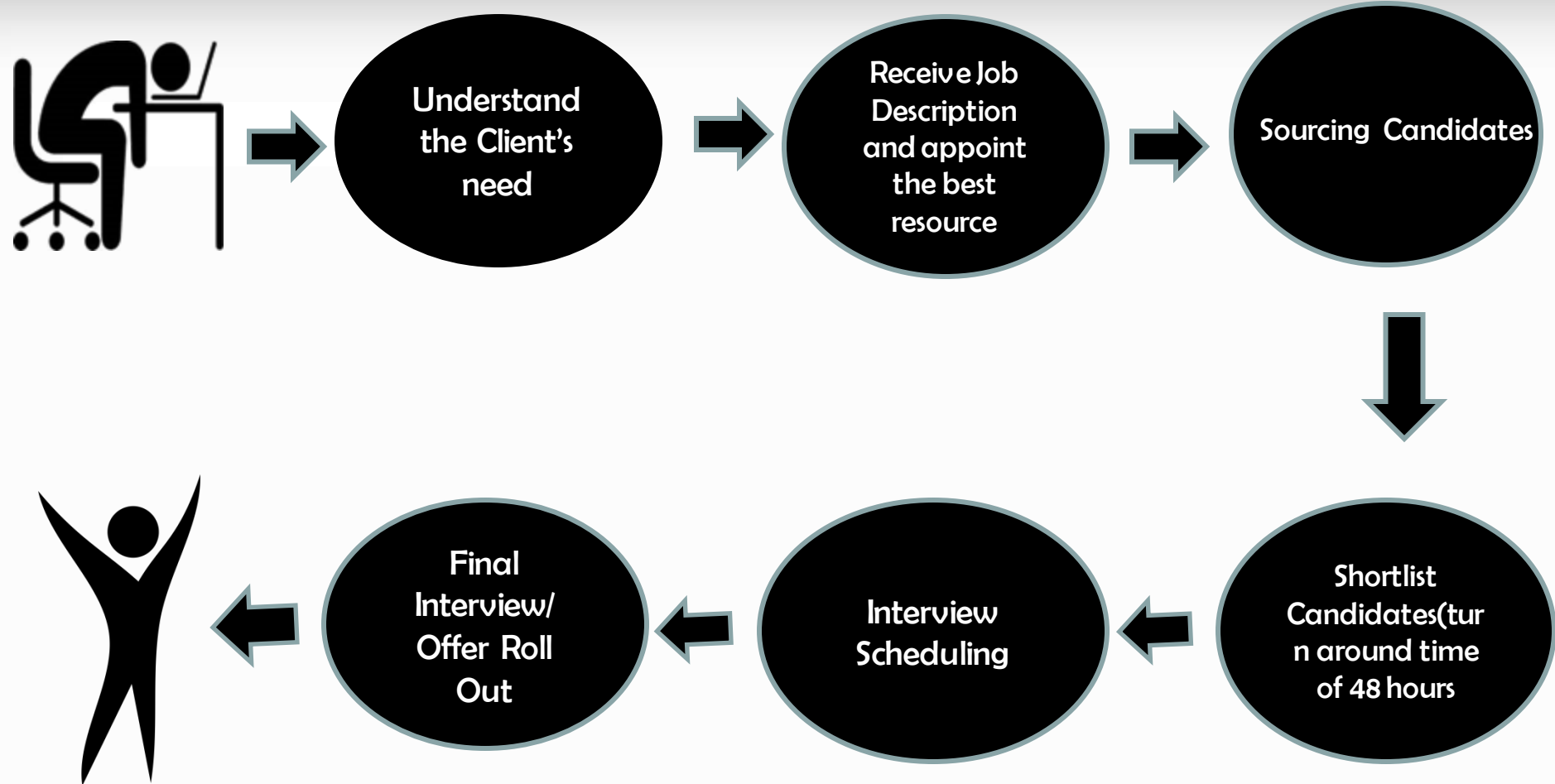
Yash Group of Companies
Facility Management Services
AN ISO 9001:2008 CERTIFIED COMPANY



What's in it for you?

- We study your company to know more than any one else in the market.
 - This makes us deliver more efficiently.
- We are subject matter expert in your field.
 - We are currently serving few other clients in the same domain and we know what you are exactly looking at.
- We are an ethical company you can rely on.
 - We do scrutinize our candidates and take their first round of interview.
 - We do a reference check on our level as well.
 - We have a turn around time of 48 hours.
 - We do conduct Telephonic/ Walk-ins and face-to-face interviews.
- We follow the process promised to you.
 - Our Usual process is as follows...

One Should Know our recruitment process



Content

Payroll



Attendance Management



Leave Management



Statutory Compliance



Pay Slips



Bank Remittance



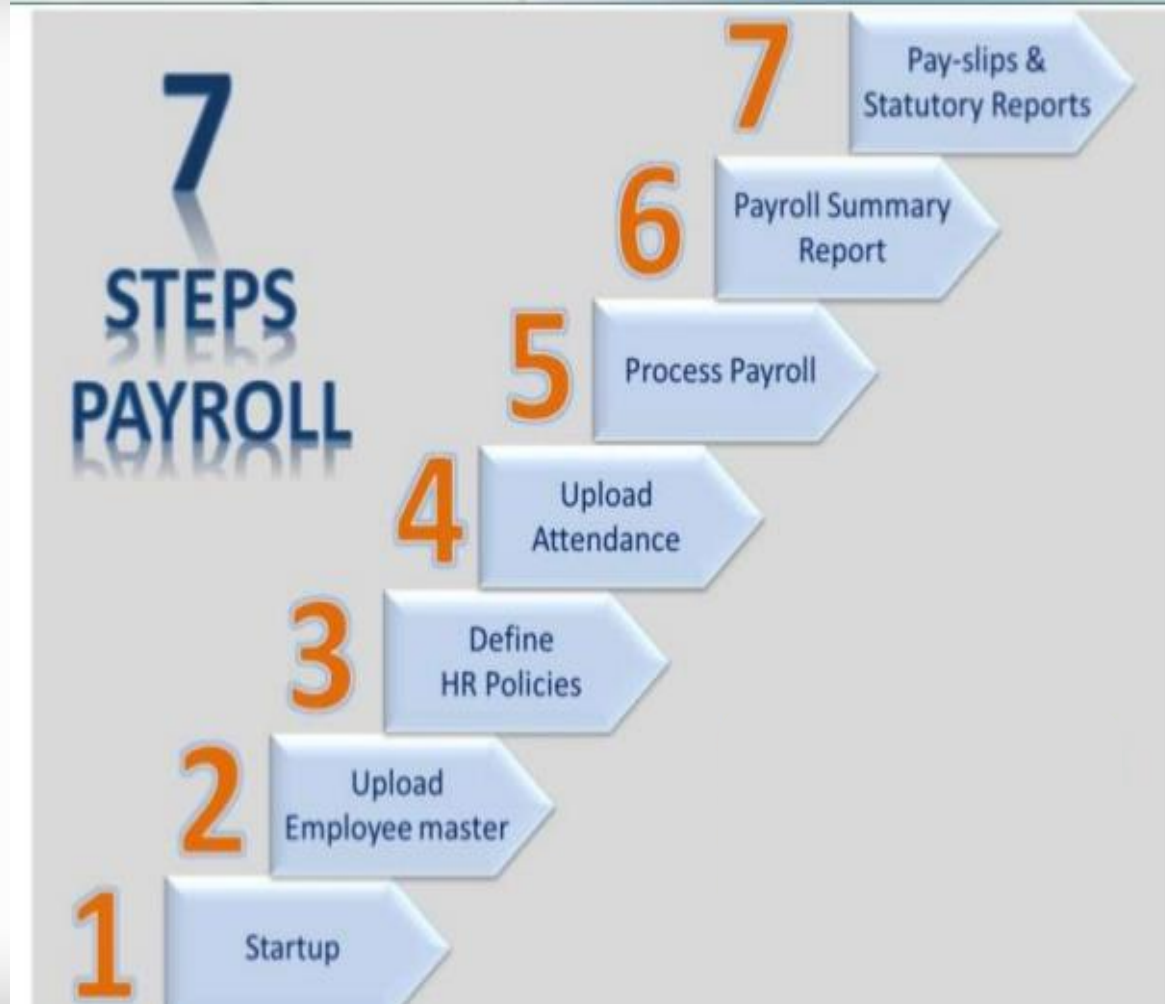
Salary Distribution to Individuals



MIS

Pay Roll Management

Payroll



Statutory Compliance

Content



DISH

MPCB

MSEDCL

ESIC

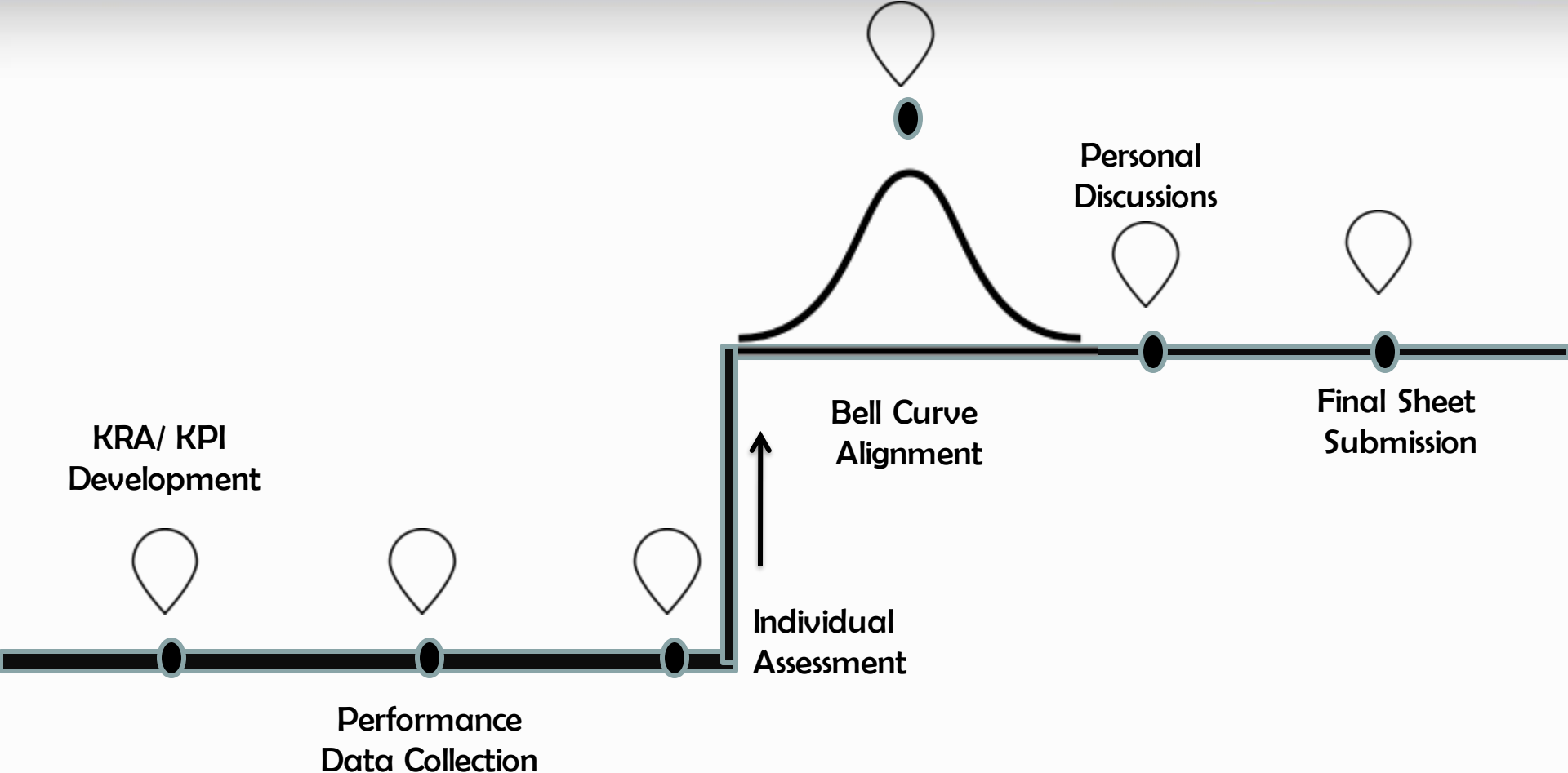
PF

MLWF

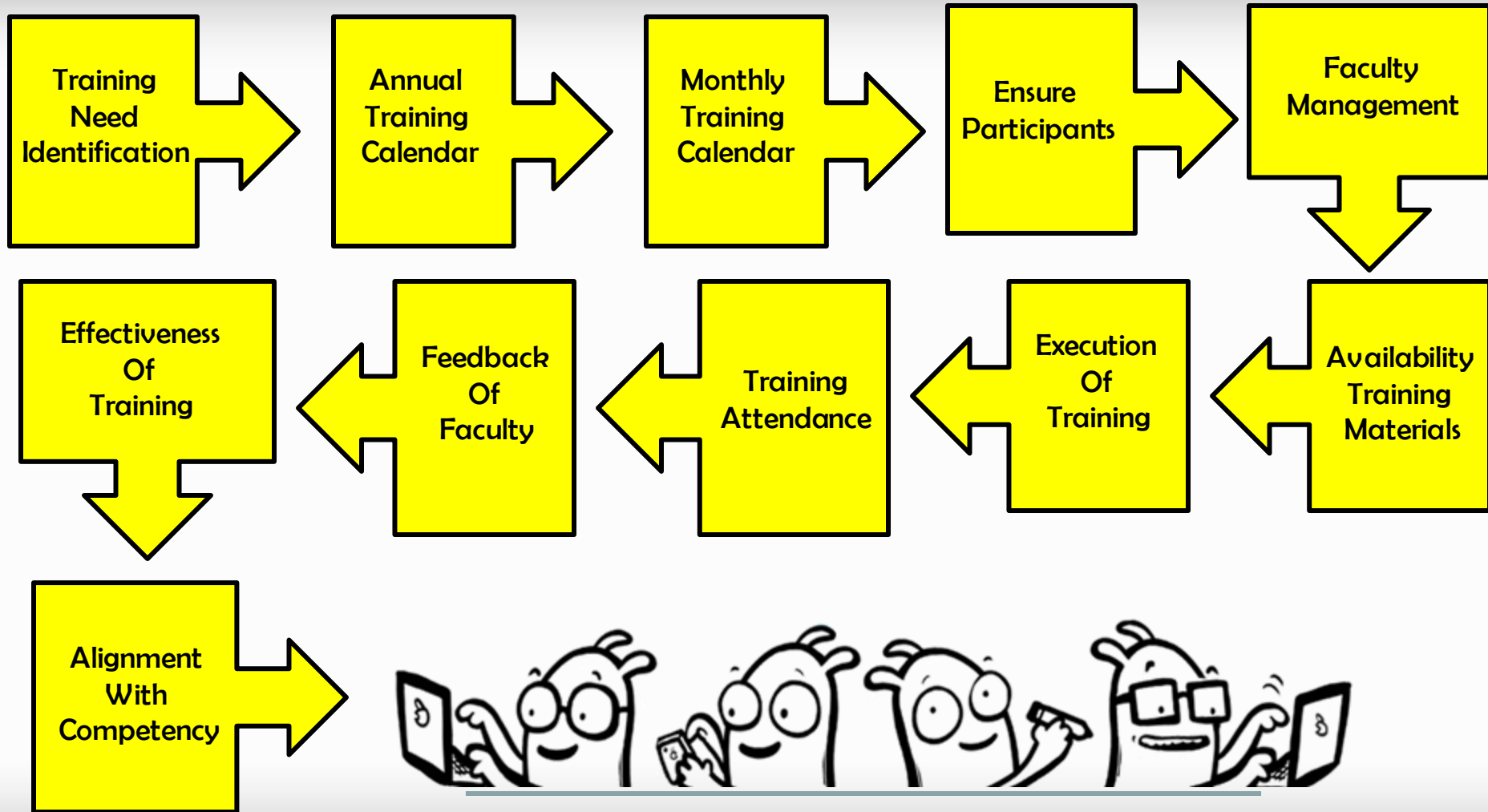
FIRE

Local Administration

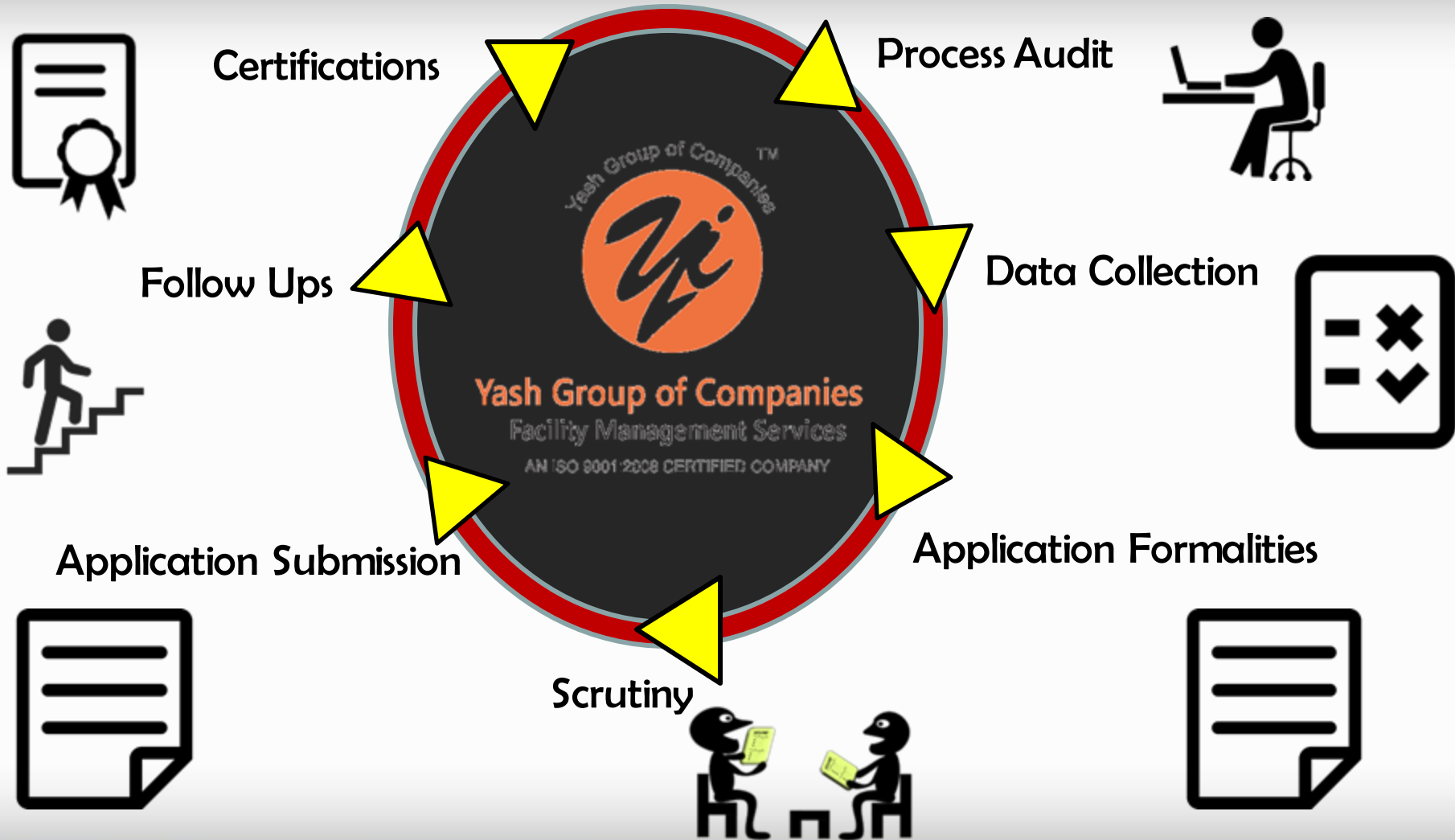
Performance Appraisals



Learning & Development



Government Liasoning



Scrap Trading Process

- 1 • Data Collection: Collecting the data of Scrap Available in Market
- 2 • Site Assessment: Visit the Site where Scrap Material is stored
- 3 • Classification of Scrap: Summaries the data of available scrap
- 4 • Quotation: Submit the quotation to Customer mentioning the payment terms
- 5 • Finalising the Rates and remit the amount accordingly
- 6 • Transportation of Scrap to our Yard
- 7 • Segregation of material
- 8 • Data Transfer: Communicate the availability of Material to Vendors
- 9 • Define the terms and condition of Sales including price
- 10 • Collect the payment from vendor
- 11 • Shift the agreed scrap material to vendors Yard

Our Legal Entity

COMPANY NAME	YASH FACILITIES SERVICES
SHOP & ESTABLISHMENT NO.	100064221705
P.F.CODE NO.	MH-PN / 120378
PERMANENT ACCOUNT NO.	AAEPZ5542L
PROFESSIONAL TAX NO.	P.T.R.C. 27675235882P / 99831836405P
GSTIN .	GSTIN 27AAEPZ5542L1Z2
E.S.I. CODE NO.	33000369170001000
SECURITY LICENSE NO.	SR.NO.01 / 12
SSI CERTIFICATION NO. (MSM)	270252101806
CRISIL	SE 3B
L W F	PUN48331
IEC No	3115004761

Where will you find us?



hr@yashgroupindia.in
godwyn.placement@yashgroupindia.in
maresh.placement@yashgroupindia.in



020-4120-3000/ 9764005579
020-6522-3030/ 7020137439



<https://www.linkedin.com/company/7862489/>



<http://yashfacilitieservices.com>
<http://www.yashgroupindia.in/>



101/02, ShankarParvati Chambers
DholePatil Road, Pune - 411001



Thank you...



Yash Group of Companies
Facility Management Services

AN ISO 9001:2008 CERTIFIED COMPANY